

OpDAT VGAD

The design-compatible prefab
fiber optic (FO) wall outlet



Quality and ease of installation meet design

The OpDAT VGAD is the design-compatible solution for everyone who wants to integrate their fiber optic infrastructure professionally and aesthetically into a building. As a prefab fiber optic (FO) wall outlet, it seamlessly fits into the switch ranges of well-known manufacturers, combining state-of-the-art fiber optic installation technology with contemporary design. Whether in residential areas, offices, industry, or on campus: the OpDAT VGAD is effective everywhere.

The wall outlet is delivered ready for installation and immediate use: the singlemode OS2 indoor cable is pre-connected, the LC duplex adapters - available in APC or UPC - are pre-installed, and the cable is securely strain-relieved via the Kevlar.

With 2 or 4 fibers and cable lengths of up to 150 m, the OpDAT VGAD covers virtually every installation scenario. Optional pulling aids additionally facilitate the insertion of the cable into the conduit and ensure fast, clean installation.

Thanks to its compact dimensions and a 45° angled plug direction, the OpDAT VGAD is highly versatile: it fits into flush-mounted, hollow-wall, and cable duct boxes with a minimum installation depth of only 45 mm.

Applications of the VGAD wall outlet

- > FITH/Residential buildings
Design integration into existing switch installations
- > Office cabling
Uniform appearance in the office environment
- > Campus cabling
High-quality fiber optic connections in companies, clinics, and educational institutions
- > Industrial cabling
Fiber optic connectivity in production halls, machine rooms, and industrial environments

Fiber type

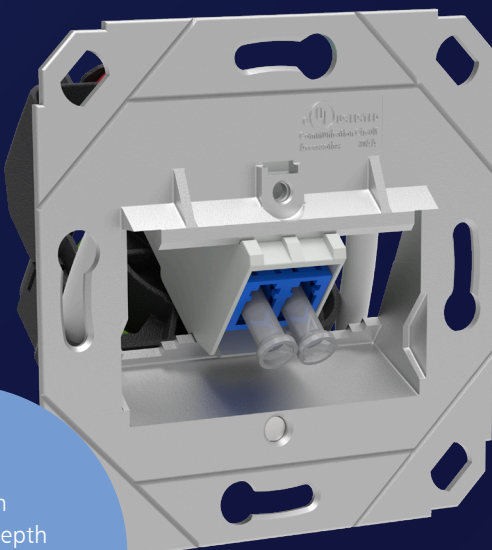
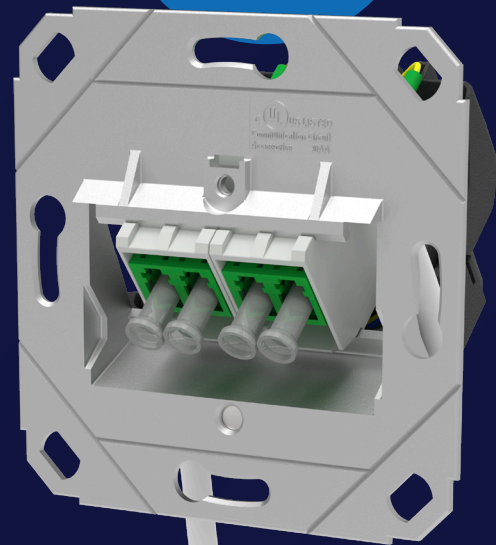
Singlemode
OS2

Number of fibers

2 or 4

Installation types

UP0, UPk, UP, AP
Surface mount frame with min.
45 mm installation depth must
be purchased separately from a
suitable third-party supplier.



Minimum
installation depth

45 mm

Adapters

1× or 2× LC-D
APC/UPC

Colors of the center/
cover plates

Pure white RAL 9010
Traffic white RAL 9016

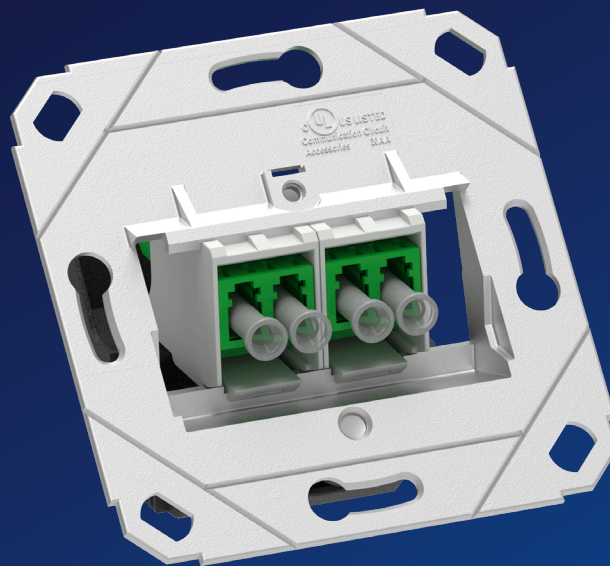
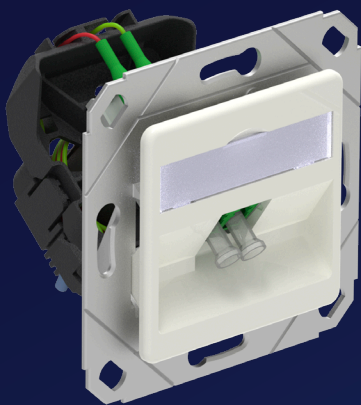


UP = Flush-mounted



AP = Surface mounted

UPk = Flush-mounted cable duct



UP0 = Flush-mounted for designer switch ranges

Overview of compatible switch ranges



Variant overview

The flexible fiber optic (FO) wall outlet for every installation situation

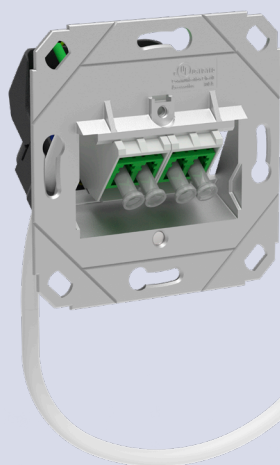
The OpDAT VGAD stands for maximum flexibility: the design-compatible fiber optic (FO) wall outlet is available in numerous variants and can be integrated into virtually any installation situation.

Depending on requirements, two fiber counts are available – 2-fiber (1× LC-D adapter) or 4-fiber (2× LC-D adapters) – as well as two colors: pure white (RAL 9010) and traffic white (RAL 9016).

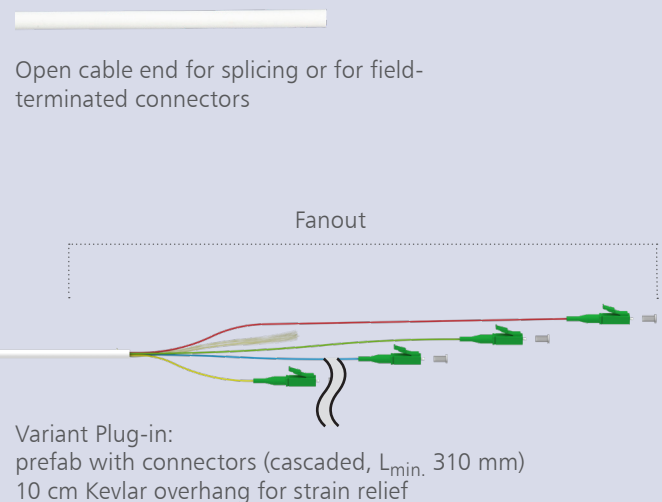
Available with mini breakout cable compact (\varnothing 4.5 mm / 900 μ m wires) or FITH cable (\varnothing 2.3 mm / 250 μ m fibers) – each as singlemode OS2 (G.657.A2).

Four variants ensure the right installation: UP0 for design switch ranges, UP for classic flush mounting, UPk for installation in cable ducts, and AP for surface mounting (surface mount frame with min. 45 mm installation depth must be purchased separately from a suitable third-party supplier).

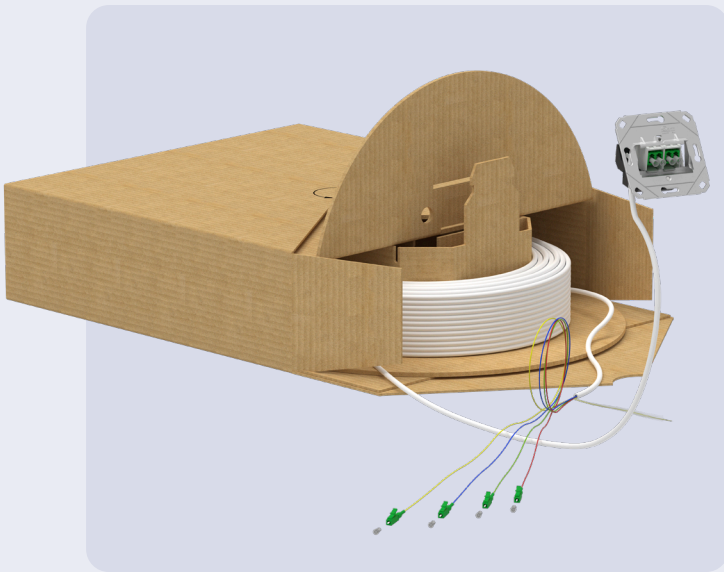
Cable end A



Cable end B



Packaging



Standard carton

The standard packaging (375 × 375 × 110 mm) is ideally suited for longer cable runs of over 60 m up to 150 m.

For lengths under 10 m, all cables are delivered as a cable loop without a drum (without pulling aid in poly bag, with pulling aid in carton).

- > Variant Splice:
FITH cable over 60 m – 150 m,
MBO-Compact cable over 60 m – 150 m

- > Variant Plug-in:
MBO-Compact cable over 10 m up to 150 m
(with pulling aid)



Compact carton

The compact packaging (280 × 295 × 85 mm) is the space-saving solution for shorter runs up to 60 m – easy to transport, simple to store, and particularly practical as it allows direct unrolling without opening the carton.

For lengths under 10 m, all cables are delivered as a cable loop without a drum (without pulling aid in poly bag, with pulling aid in carton).

- > Variant Splice:
FITH cable over 10 m – 60 m,
MBO-Compact cable over 10 m – 60 m

- > Variant Plug-in:
MBO-Compact cable over 10 m up to 60 m
(with pulling aid Compact or bubble wrap)



Technical data

| | | Features |
|------------------------------------|-----------------------|--|
| Dimensions wall outlet (H x W x D) | | 69.9 x 69.9 x 51.5 mm |
| Capacity | | 4 fibers |
| Fanout | L _{Fmin} | 310 mm |
| | Cascading | 40 mm, single step |
| Pulling aid IP50 | max. outer diameter | 29.5 mm |
| Pulling aid Compact | max. outer diameter | 16 mm |
| | Type | Cardboard drum in carton |
| Standard packaging | Mini-Breakout Compact | over 60 m up to 150 m (Variant Splice and Variant Plug-in with pulling aid Compact or bubble wrap) over 10 m up to 150 m (Variant Plug-in with pulling aid IP50) |
| | Capacity | |
| | FITH cable | over 60 m up to 150 m (Variant Splice) |
| | Dimensions | 375 x 375 x 110 mm |
| Compact packaging | Mini-Breakout Compact | over 10 m up to 60 m (Variant Plug-in with pulling aid Compact or bubble wrap) |
| | Capacity | |
| | FITH cable | over 10 m up to 60 m (Variant Splice) |
| | Dimensions | 280 x 295 x 85 mm |

Accessories





Cover plates

| | Description | P/N |
|---|--|---------------|
|  | Cover plates 80 x 80 mm, pure white, module | 820395-0102-1 |
|  | Cover plates 80 x 80 mm, traffic white, module | 820395-0127-1 |



Center plates 1 port

| | Description | P/N |
|---|---|---------------|
|  | Center plate 50 x 50 mm 1 port, pure white, module | 860210-0002-1 |
|  | Center plate 50 x 50 mm 1 port, traffic white, module | 860210-27-1 |



Center plates 2 port

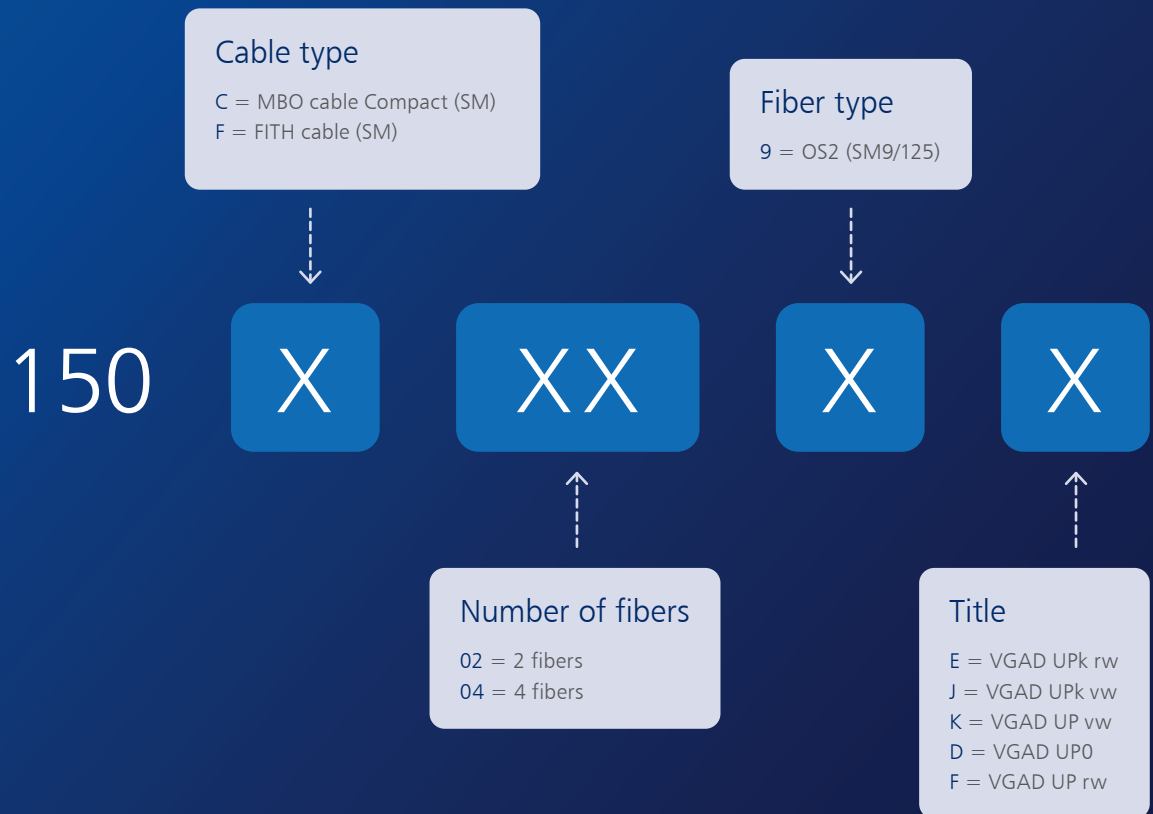
| | Description | P/N |
|--|---|---------------|
| | Center plate 50 × 50 mm 2 port, pure white, module | 860210-0202-I |
| | Center plate 50 × 50 mm 2 port, traffic white, module | 860210-0227-I |

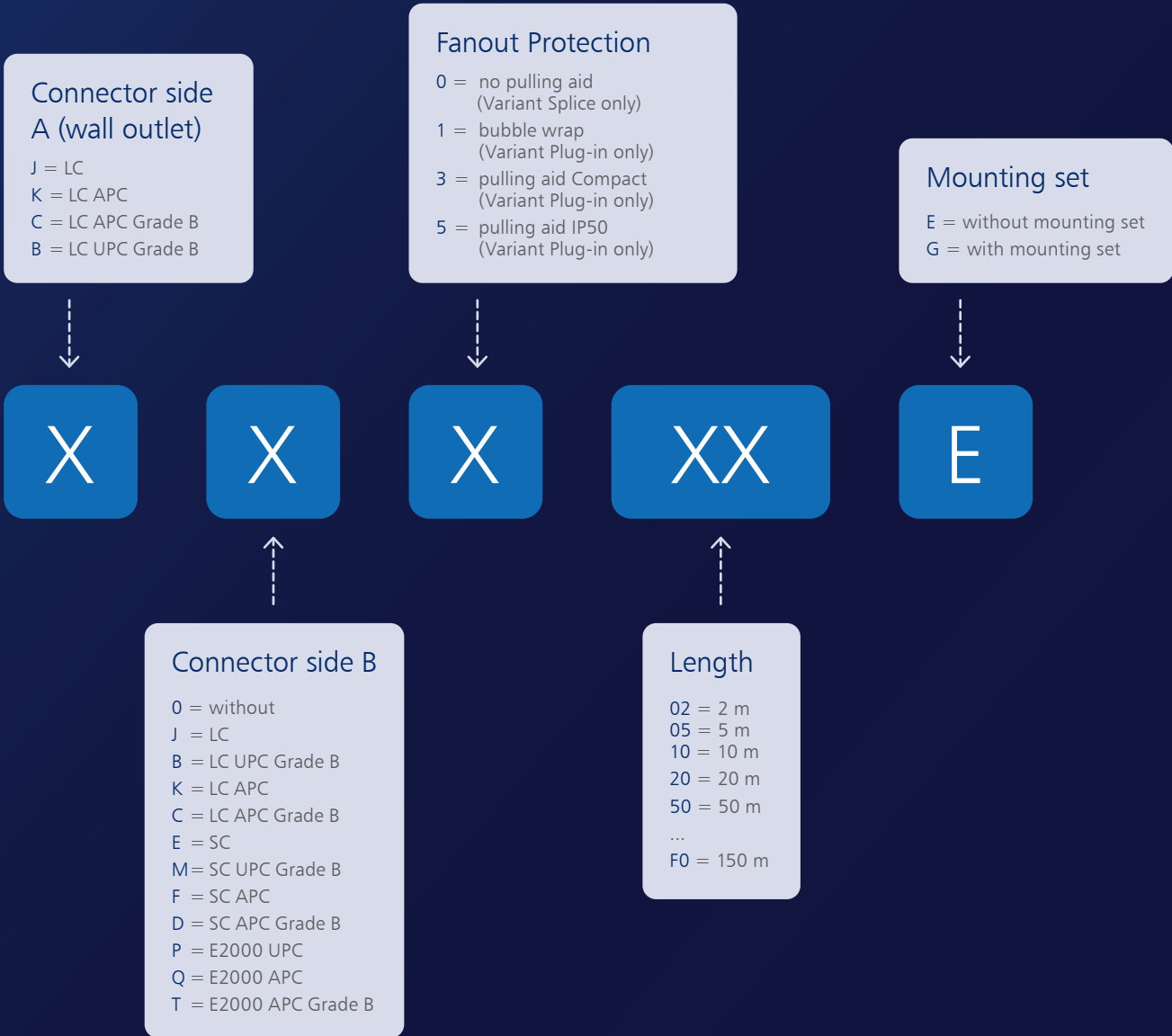
Patch cables



| | Description | P/N |
|--|---|--------------|
| | OpDAT patch cord LC-S APC/LC-S APC OS2, white | 151P7JAJAXXE |
| | OpDAT patch cord LC-S/LC-S OS2, white | 151P7JOJXXE |
| | OpDAT patch cord LC-D APC/LC-D APC OS2 | 151P1JAJAXXE |
| | OpDAT patch cord LC-D/LC-D OS2 | 151P1JOJXXE |

Order key





Further variants on request.

Use our configurator on our homepage www.metz-connect.com to configure the required wall outlets.

This allows you to configure wall outlets individually according to your requirements and order them directly.



METZ CONNECT GmbH

Im Tal 2
78176 Blumberg
Germany

Phone +49 7702 533-0
Fax +49 7702 533-189

info@metz-connect.com
www.metz-connect.com

METZ CONNECT USA Inc.

200 Tornillo Way
Tinton Falls, NJ 07712
USA

Phone +1 732 389 1300
Fax +1 732 389 9066

METZ CONNECT France SAS

28, Rue Schweighaeuser
67000 Strasbourg
France

Phone +33 3886 17073
Fax +33 3886 19473

METZ CONNECT AUSTRIA GmbH
c/o German chamber of commerce
in Austria

Schwarzenbergplatz 5, Top 3/1
1030 Vienna
Austria

Phone +43 1 227 12 64
Fax +43 1 227 12 66

METZ CONNECT Zhongshan Ltd.

Ping Chang Road
Ping Pu Industrial Park
Sanxiang Town
Zhongshan City, 528463
Guangdong Province
China

Phone +86 760 86365055
Fax +86 760 86365050

METZ CONNECT Asia Pacific Ltd.

Suite 1803, 18/F
Chinachem Hollywood Centre,
1 Hollywood Road, Central
Hong Kong

Phone +852 26 027 300
Fax +852 27 257 522

