

Data sheet

Mounting bracket HWF

Page 1/4

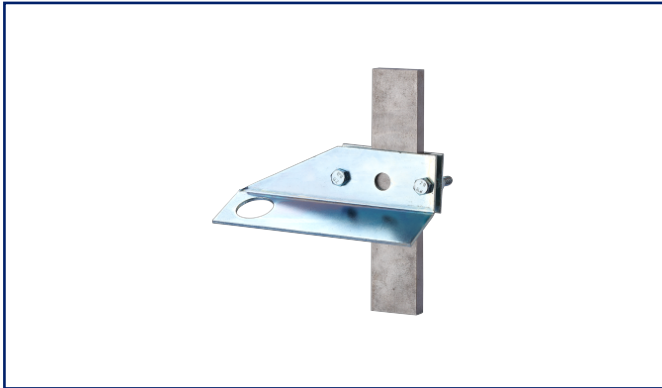
P/N
110151

EAN 4250184120315

2025/08/20

Version: G

Illustrations



See enlarged drawings at the end of document

Product specification

To fasten sensors with max. diameters of 18 mm. Ideal for fastening on flat irons. An auxiliary cam for shafts with diameters of up to 25 - 40 mm is included in the delivery.



Data sheet

Mounting bracket HWF

Page 2/4

P/N
110151

EAN 4250184120315

2025/08/20

Version: G

Technical Data

Material

Color silver

Climatic Data

Operating

Relative humidity max. 85 % non-condensing

Classifications

ETIM 7.0 EC002622

ETIM 8.0 EC002622

ETIM 9.0 EC002622

ETIM 10.0 EC002622

Application note

This product is a standard product of METZ CONNECT. METZ CONNECT is not aware of the specific intended use of the goods by the Customer or any customers of the Customer. The Customer guarantees that it has fully and sufficiently tested the use of the goods and any product modifications, product changes or product enhancements with regard to the specific intended use in accordance with the state of the art or in any other way. At METZ CONNECT's request, the Customer shall submit and make available meaningful evidence (e.g. test and laboratory protocols, certifications, etc.).



Data sheet
Mounting bracket HWF

Page 3/4

P/N
110151

EAN 4250184120315

2025/08/20

Version: G

Accessories

P/N	Designation
895604	Auxiliary cam for shafts up to 80 mm



Data sheet
Mounting bracket HWF

Page 4/4

P/N
110151

EAN 4250184120315

2025/08/20

Version: G

Accessories from

P/N	Designation
1101500522	DRIW-E16, 230 V AC
1101501322	DRIW-E16, 24 V AC/DC