

Data sheet

OpDAT slide² patch panel Prefab 24xSC-D OS2 gray

Page 1/5

P/N

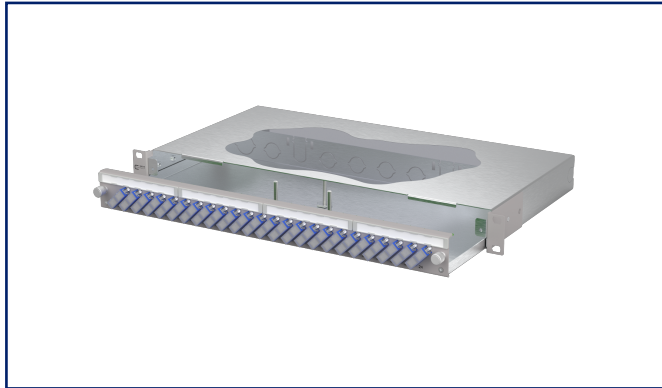
150460E224-E

EAN 4251394678184

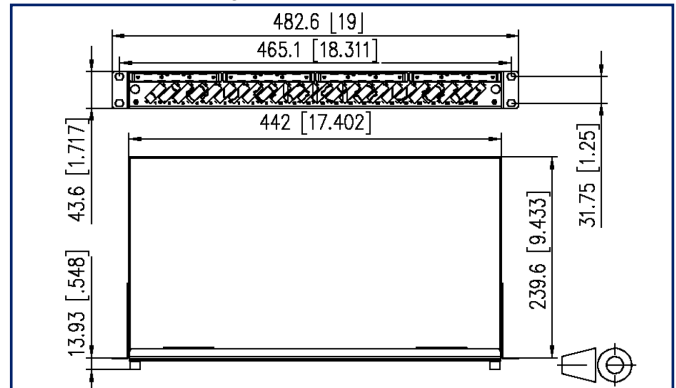
2025/10/09

Version: E

Illustrations



Dimensional drawing



See enlarged drawings at the end of document

Product specification

- 19-inch, 1RU patch panel with pull-out drawer
- Equipped with 24xSC-D couplers
- Inclined coupling arrangement
- Tool-free metal bayonet catch for locking the drawer
- Drawer can be tilted and completely removed for easier installation (drawer stop)
- Depth adjustable by 30 mm
- Front panel with labelling field
- Front panel powder-coated in gray RAL 7035
- Several possibilities for cable entry on the back: 6xM20; 2xM25; 2xPrefab installation cut-outs
- Prepared for the installation of pre-assembled cables



Data sheet
OpDAT slide² patch panel Prefab
24xSC-D OS2 gray

Technical Data

General Data

| | |
|-------------------------|---|
| Fields of application | data center office areas structured building cabling interior Distributed building services |
| Features variant | Prefab |
| Design | Eithdrawable |
| Mounting style | screwable |
| Transmission technology | Fiber optic |
| Port numbering | yes |
| Color housing | metal |
| Color front plate | RAL 7035 - light gray |
| Adapter color | blue |
| Dimensions | |
| Dimension (L x W x H) | 244 mm x 482 mm x 47 mm |
| Dimension (L x W x H) | 9.606 in. x 18.976 in. x 1.85 in. |
| Inches | 19 inches |
| Height unit | 1RU |
| Installation depth | 240 mm |
| Installation depth | 9.449 in. |
| Fiber class | OS2 |
| Mode type of the fiber | Singlemode |
| Shape | UPC (Ultra Physical Contact) |
| Labeling option | label strip / labeling strip |

Connections/interfaces

| | |
|---------------------------------|---|
| Adapter type | SC-D |
| Adapter interface outside | SC-D |
| Adapter interface inside | SC-D |
| Number of adapters | 24 |
| Number of breakouts front panel | 24 |
| Cable access/outlet | several possibilities for cable entry on the back |

Data sheet
OpDAT slide² patch panel Prefab
24xSC-D OS2 gray

Technical Data

Mechanical data

| | |
|---------------|----------------|
| Cut-out | SC-D/LC-Q/ST-D |
| strain relief | optional |

Materials and material properties

| | |
|-------------------------------|--|
| Material - Housing | sheet steel |
| Material - Housing finish | Zn (zinc) |
| Material - Front cover | sheet steel |
| Material - Front cover finish | powder-coated |
| Material - Sleeve | ceramic, slotted |
| Material - Coupler housing | Plastics |
| RoHS | compliant, certificate see further information |
| REACH | compliant, 7439-92-1 – lead |

Standards/Regulations

| | |
|-------------------------|------------------|
| FO connector interfaces | SC - IEC 61754-4 |
|-------------------------|------------------|

Classifications

| | |
|-----------|----------|
| ETIM 8.0 | EC001130 |
| ETIM 9.0 | EC001130 |
| ETIM 10.0 | EC001130 |

Packing details

| | |
|-------------------|---------------|
| Type of packaging | 1 pc(s) / box |
|-------------------|---------------|

Application note

This product is a standard product of METZ CONNECT. METZ CONNECT is not aware of the specific intended use of the goods by the Customer or any customers of the Customer. The Customer guarantees that it has fully and sufficiently tested the use of the goods and any product modifications, product changes or product enhancements with regard to the specific intended use in accordance with the state of the art or in any other way. At METZ CONNECT's request, the Customer shall submit and make available meaningful evidence (e.g. test and laboratory protocols, certifications, etc.).

Data sheet
**OpDAT slide² patch panel Prefab
24xSC-D OS2 gray**

Page 4/5

P/N
150460E224-E
EAN 4251394678184
2025/10/09
Version: E

Accessories

| P/N | Designation |
|--------------|--|
| 150240M20Z-E | OpDAT strain relief M20 |
| 150240M25Z-E | OpDAT strain relief M25 |
| 150240Z20Z-E | OpDAT strain relief for M20 |
| 1509010000-E | OpDAT splice tray for 12 splices, unequipped |
| 1509010001-E | OpDAT splice tray with 1 crimp protection cover |
| 1509010002-E | OpDAT splice tray with 2 splice protection cover |
| 15090200-E | OpDAT cover for splice tray |
| 15090505-I | Blind cover SC-Duplex/LC-Quad/ST-Duplex black, without overhang |

Data sheet
OpDAT slide² patch panel Prefab
24xSC-D OS2 gray

Page 5/5

P/N
150460E224-E
EAN 4251394678184
2025/10/09
Version: E

Illustrations

Dimensional drawing

