

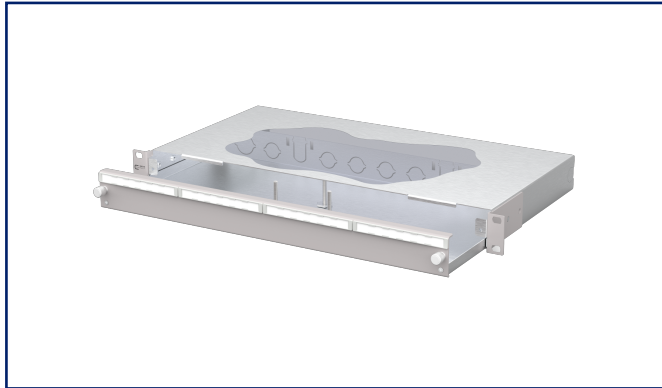
Data sheet

OpDAT slide² patch panel Connect gray

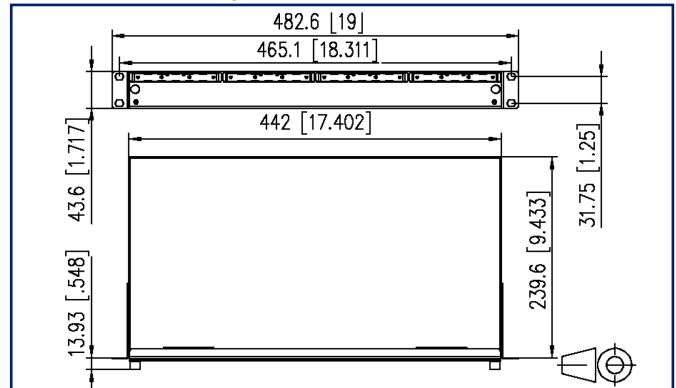
Page 1/4

P/N
1504600000-E
EAN 4251394684123
2025/10/09
Version: C

Illustrations



Dimensional drawing



See enlarged drawings at the end of document

Product specification

- 19-inch, 1RU patch panel with pull-out drawer
- Tool-free metal bayonet catch for locking the drawer
- Drawer can be tilted and completely removed for easier installation (drawer stop)
- Depth adjustable by 30 mm
- Blind front panel
- Front panel powder-coated in gray RAL 7035
- Several possibilities for cable entry on the back: 6xM20; 2xM25; 2xPrefab installation cut-outs
- Prepared for the installation of pre-assembled cables



Data sheet
OpDAT slide² patch panel Connect gray

Technical Data

General Data

Fields of application	data center office areas structured building cabling interior Distributed building services
Features variant	unequipped
Design	Eithdrawable
Mounting style	screwable
Transmission technology	Fiber optic
Port numbering	yes
Color housing	metal
Color front plate	RAL 7035 - light gray
Dimensions	
Dimension (L x W x H)	244 mm x 482 mm x 47 mm
Dimension (L x W x H)	9.606 in. x 18.976 in. x 1.85 in.
Inches	19 inches
Height unit	1RU
Installation depth	240 mm
Installation depth	9.449 in.
Labeling option	label strip / labeling strip

Connections/interfaces

Cable access/outlet	several possibilities for cable entry on the back
---------------------	---

Mechanical data

Cut-out	Blanking plate
strain relief	optional

Materials and material properties

Material - Housing	sheet steel
Material - Housing finish	Zn (zinc)
Material - Front cover	sheet steel
Material - Front cover finish	powder-coated
RoHS	compliant, certificate see further information
REACH	compliant, 7439-92-1 – lead

Data sheet
OpDAT slide² patch panel Connect gray

Page 3/4

P/N
150460000-E
EAN 4251394684123
2025/10/09
Version: C

Technical Data

Classifications

ETIM 8.0	EC001130
ETIM 9.0	EC001130
ETIM 10.0	EC001130

Packing details

Type of packaging	1 pc(s) / box
-------------------	---------------

Application note

This product is a standard product of METZ CONNECT. METZ CONNECT is not aware of the specific intended use of the goods by the Customer or any customers of the Customer. The Customer guarantees that it has fully and sufficiently tested the use of the goods and any product modifications, product changes or product enhancements with regard to the specific intended use in accordance with the state of the art or in any other way. At METZ CONNECT's request, the Customer shall submit and make available meaningful evidence (e.g. test and laboratory protocols, certifications, etc.).



Data sheet
OpDAT slide² patch panel Connect gray

Page 4/4

P/N
150460000-E
EAN **4251394684123**
2025/10/09
Version: C

Illustrations

Dimensional drawing

