

Data sheet

OpDAT fix² patch panel splice 24xSC-D OS2 gray

Page 1/6

P/N

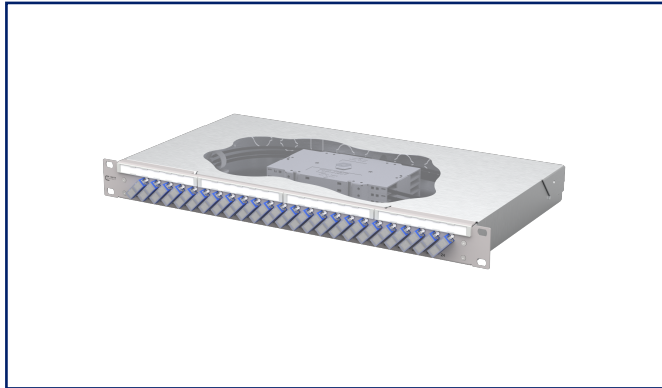
150459E224-E

EAN 4251394677903

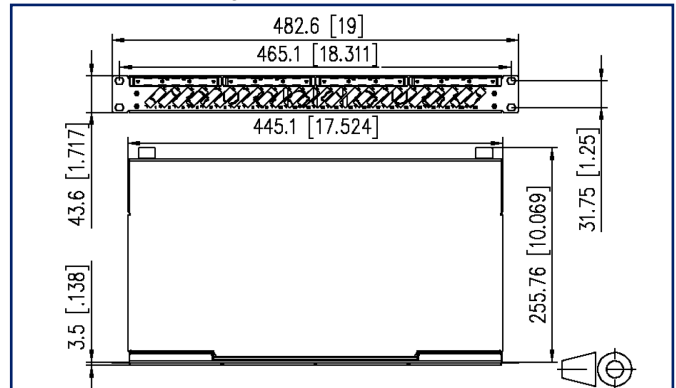
2025/10/09

Version: G

Illustrations



Dimensional drawing



See enlarged drawings at the end of document

Product specification

- 19-inch, 1RU patch panel for fixed installation
- Equipped with 24xSC-D couplers and 48xSC pigtails OS2
- Inclined coupling arrangement
- Pigtails inserted and set down in standard splice cassette with crimp splice holders
- Pigtail visually inspected and inserted into couplers
- Color coding according to IEC 60304
- Front panel with labelling field
- Front panel powder-coated in gray RAL 7035
- Tool-free opening of the cover
- Several possibilities for cable entry on the back: 6xM20; 2xM25; 2xPrefab installation cut-outs



Data sheet
OpDAT fix² patch panel splice
24xSC-D OS2 gray

Technical Data

General Data

| | |
|-----------------------------------|---|
| Fields of application | data center office areas structured building cabling interior Distributed building services |
| Design | Fixed installation |
| Mounting style | screwable |
| Transmission technology | Fiber optic |
| Port numbering | yes |
| Color housing | metal |
| Color front plate | RAL 7035 - light gray |
| Adapter color | blue |
| Dimensions | |
| Dimension (L x W x H) | 259 mm x 483 mm x 44 mm |
| Dimension (L x W x H) | 10.197 in. x 19.016 in. x 1.732 in. |
| Inches | 19 inches |
| Height unit | 1RU |
| Installation depth | 256 mm |
| Installation depth | 10.079 in. |
| Number of cables/ buffered fibers | 48 |
| Cable Type | pigtail(s) |
| Fiber class | OS2 |
| Mode type of the fiber | Singlemode |
| Shape | UPC (Ultra Physical Contact) |
| Fiber construction | 9/125 µm |
| Labeling option | label strip / labeling strip |

Connections/interfaces

| | |
|---------------------------------|---|
| Adapter type | SC-D |
| Adapter interface outside | SC-D |
| Adapter interface inside | SC-D |
| Number of adapters | 24 |
| Number of breakouts front panel | 24 |
| Cable access/outlet | several possibilities for cable entry on the back |

Data sheet
OpDAT fix² patch panel splice
24xSC-D OS2 gray

Technical Data

Optical characteristics

| | |
|----------------|-------------|
| Insertion loss | max. 0,3 dB |
| Return loss | min. 50 dB |

Mechanical data

| | |
|--------------------------------|----------------|
| Cut-out | SC-D/LC-Q/ST-D |
| Connector type | duplex |
| Life - Number of mating cycles | min. 1000 |
| strain relief | optional |

Materials and material properties

| | |
|-------------------------------|--|
| Material - Housing | sheet steel |
| Material - Housing finish | Zn (zinc) |
| Material - Front cover | sheet steel |
| Material - Front cover finish | powder-coated |
| Material - Sleeve | ceramic, slotted |
| Material - Coupler housing | Plastics |
| RoHS | compliant, certificate see further information |
| REACH | compliant, 7439-92-1 – lead |

Standards/Regulations

| | |
|--|---|
| FO connector interfaces | SC - IEC 61754-4 |
| Fiber standard | ISO/IEC 60793-2-50 (B6_a1) ITU-T G.657.A1 |
| Optical fibers - Interconnecting devices and passive components - basic test and measuring methods | |
| Fibre optic interconnecting devices and passive components - Insertion loss | IEC 61300-3-4 |
| Fibre optic interconnecting devices and passive components - Return loss | IEC 61300-3-6 |
| Fibre optic interconnecting devices and passive components - Visual inspection of plug end face | IEC 61300-3-35 |
| Color coding fiber/ wire(s) | IEC 60304 /VDE 0888 |

Classifications

| | |
|-----------|----------|
| ETIM 8.0 | EC001130 |
| ETIM 9.0 | EC001130 |
| ETIM 10.0 | EC001130 |

Data sheet
OpDAT fix² patch panel splice
24xSC-D OS2 gray

Page 4/6

P/N

150459E224-E

EAN 4251394677903

2025/10/09

Version: G

Technical Data

Packing details

Type of packaging 1 pc(s) / box

Application note

This product is a standard product of METZ CONNECT. METZ CONNECT is not aware of the specific intended use of the goods by the Customer or any customers of the Customer. The Customer guarantees that it has fully and sufficiently tested the use of the goods and any product modifications, product changes or product enhancements with regard to the specific intended use in accordance with the state of the art or in any other way. At METZ CONNECT's request, the Customer shall submit and make available meaningful evidence (e.g. test and laboratory protocols, certifications, etc.).

Data sheet
OpDAT fix² patch panel splice
24xSC-D OS2 gray

Page 5/6

P/N
150459E224-E
EAN 4251394677903
2025/10/09
Version: G

Accessories

| P/N | Designation |
|--------------|--|
| 150240M20Z-E | OpDAT strain relief M20 |
| 150240M25Z-E | OpDAT strain relief M25 |
| 150240Z20Z-E | OpDAT strain relief for M20 |
| 1509010000-E | OpDAT splice tray for 12 splices, unequipped |
| 1509010001-E | OpDAT splice tray with 1 crimp protection cover |
| 1509010002-E | OpDAT splice tray with 2 splice protection cover |
| 15090200-E | OpDAT cover for splice tray |
| 15090505-I | Blind cover SC-Duplex/LC-Quad/ST-Duplex black, without overhang |



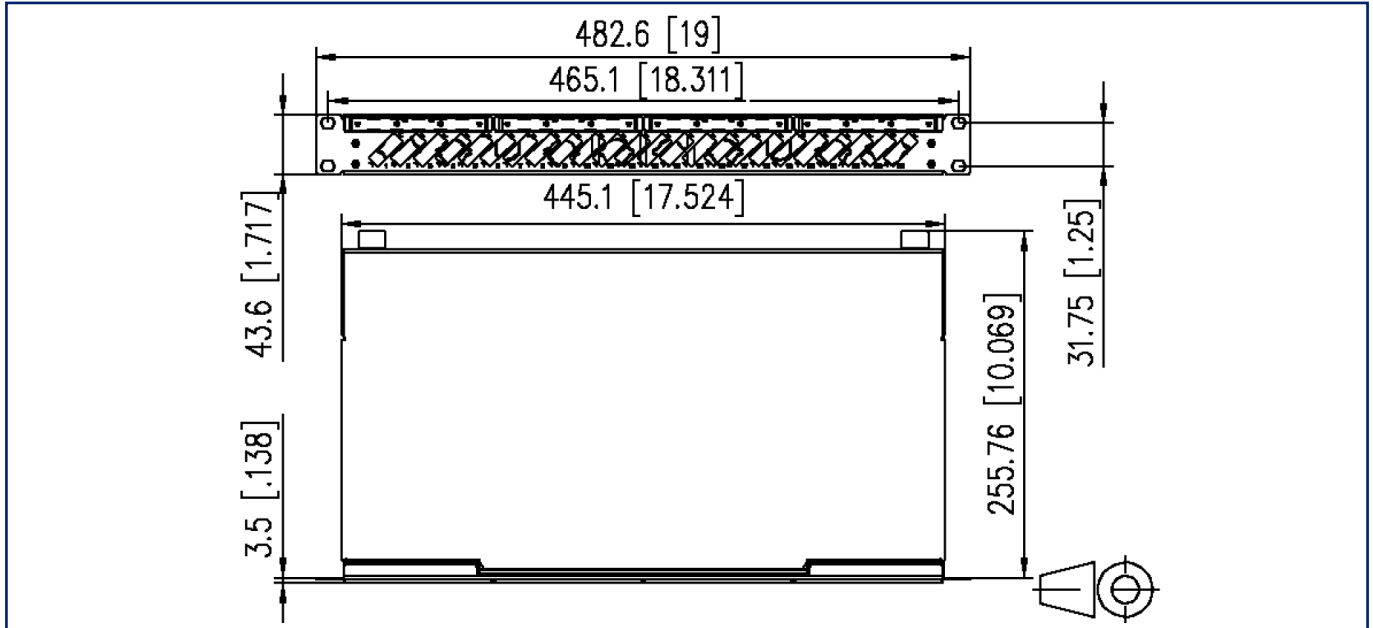
Data sheet
OpDAT fix² patch panel splice
24xSC-D OS2 gray

Page 6/6

P/N
150459E224-E
EAN 4251394677903
2025/10/09
Version: G

Illustrations

Dimensional drawing



© 2025 METZ CONNECT - Technische Änderungen vorbehalten! Subject to modifications! Sous réserve de modifications techniques!

